

Attention: Members of the press

2025.9
Fukuda Art Museum

Fukuda Art Museum 2026 Annual Schedule of Special Exhibitions ～ Japan's Oldest Surviving Shunga Joins the Collection ～

In the fall of 2026, Fukuda Art Museum will present its first-ever exhibition of *shunga* since opening, featuring the debut public display of *Chigo Zōshi*, Japan's oldest surviving *shunga*. Added to the museum's collection in 2025, this elusive work—created in the early 14th century—has long remained hidden from public view and represents a rare and invaluable cultural treasure.

To commemorate this special occasion, the exhibition will also showcase a selection of masterpieces from the Edo to Meiji periods, exploring diverse “forms” and “expressions of love” depicted in *shunga* across the centuries.

In the spring and early summer, the museum will present the “Jakuchū Exhibition,” featuring the first display of Itō Jakuchū's handscroll *Fruits and Vegetables* following its recent restoration. This will also mark the debut showing of *Old Pine and a White Crane*, a newly acquired masterpiece by Jakuchū. It is a rare opportunity to fully experience the unique charm of his art.

In addition, the museum is preparing a wide variety of special exhibitions throughout the year, including *100th Anniversary of Shōwa 1: An Era Colored by Seihō, Kaii, Matazō, et al* and *Wishing for Happiness: Paintings of Prayer* (tentative). These programs will offer visitors a fresh perspective distinct from previous exhibitions at Fukuda Art Museum.



Annual Schedule of Fukuda Art Museum Special Exhibitions

Jan. 31, 2026 (Sat) – Apr. 12 (Sun)	100th Anniversary of Shōwa 1: An Era Colored by Seihō, Kaii, Matazō, et al
Apr. 25 (Sat) – Jul. 5 (Sun)	Jakuchū: Prancing Feathers and Swelling Gourds
Jul. 18 (Sat) – Sep. 6 (Sun)	Wishing for Happiness: Paintings of Prayer (tentative)
Sep. 19 (Sat) – Jan. 17, 2027 (Sun)	The Human Form, The Shape of Love (tentative) - Unveiling Japan's Oldest Shunga

Inquiries from Press

Fukuda Art Museum PR Office (at KYODO PUBLIC RELATIONS CO., LTD.)

In-charge : Tanaka / Higuchi

Email : fukudamuseum-pr@kyodo-pr.co.jp

January 31, 2026 (Sat) – April 12, 2026 (Sun)

1st period: January 31 (Sat) – March 2 (Mon) 2nd period: March 4 (Wed) – April 12 (Sun)

100th Anniversary of Shōwa 1: An Era Colored by Seihō, Kaii, Matazō, et al

In commemoration of the centennial of the Shōwa era, the exhibition will present 100 carefully selected works created during that period. Memories of Emperor Showa's 64-year reign from 1926 to 1989, evoke mixed feelings. It was a momentous period that started with financial and growing militarization followed by war, defeat, reconstruction, and rapid economic growth. Upheavals in the social world affected artists, too.



Sugiyama Yasushi 《Eon》 Ex-Yamamoto Kenji Collection
Fukuda Art Museum, First shown at this museum

They navigated the stormy seas of a turbulent time. Before and after the war, Showa art had a completely different character. Senior artists like Takeuchi Seihō, Yokoyama Taikan, and Kawai Gyokudō had lived through earlier reigns but just when they were at their peak, the hardship of war affected everyone, including painters. Recovering from the shock of war, Higashiyama Kaii, Sugiyama Yasushi, and others in the up-and-coming generation steered Japanese painting into the future.

The 100 paintings on show richly document the winds of change breathed by the era's artists.

April 25, 2026 (Sat) – July 5, 2026 (Sun)

1st period: April 25 (Sat) – June 1 (Mon) 2nd period: June 3 (Wed) – July 5 (Sun)

Jakuchū: Prancing Feathers and Swelling Gourds

In 2023, the existence of Itō Jakuchū's scroll "Fruits & Vegetables" was confirmed. Long held in Europe, it finally returned to Japan the following year.

This exhibition will present the work after nearly a year of conservation, alongside the first public showing of *Old Pine and a White Crane*, which entered the collection in 2025. In addition, approximately thirty works by Jakuchū will be on view, spanning his career from his earliest pieces—such as *Roosters and Turnips*—to his later masterpieces. The exhibition will also feature outstanding works from the Fukuda collection, including paintings by Yosa Buson, Maruyama Ōkyo, and Nagasawa Rosetsu, contemporaries of Jakuchū who were active in Kyoto.



Itō Jakuchū 《Fruits & Vegetables》 (details) Fukuda Art Museum



Itō Jakuchū 《Old Pine and White Crane》
Fukuda Art Museum /First Shown

July 18, 2026 (Sat) – September 6, 2026 (Sun)

Wishing for Happiness —Paintings of Prayer— (tentative)

From the cave paintings of Lascaux and Altamira to the present day, people have often imbued their art with prayers. This exhibition presents, for the first time, a comprehensive display of Buddhist paintings by modern Japanese artists such as Irie Hakō and Murakami Kagaku from our collection. It also features works expressing prayers for happiness, including auspicious motifs by artists like Nagasawa Rosetsu and Soga Shōhaku.



Kimura Buzan 《Celestial Maidens with Flowers》
Fukuda Art Museum

September 19, 2026 (Sat) – January 17, 2027 (Sun)

The Human Form, The Shape of Love (tentative) - Unveiling Japan's Oldest Shunga

For the first time, the oldest surviving shunga (erotic painting) Chigo Zōshi, created in the early 14th century, will be on display. Long preserved at Daigo-ji Temple and often referred to as a “phantom work,” this historically significant piece joined our collection in 2025. The work depicts the intimate acts between a monk and a chigo (a young male attendant in Buddhist temples), accompanied by explanatory inscriptions, and is distinguished by its gentle color palette, the humorous expressions of its figures, and the rich, imaginative storytelling found in its details. In addition to Chigo Zōshi, the exhibition presents 11 shunga from the Edo to Meiji periods. Of particular note is Koshibagaki Zōshi (Edo period, manuscript), considered Japan's oldest shunga. The exhibition also features other works exploring human form and emotion, including Shinnō-zu by Hakuin Ekaku and the Twelve Immortals Screen by Yosa Buson.



Unknown 《Chigo Zōshi》 (detail) Fukuda Art Museum
First Shown at this museum



Unknown 《Koshibagaki Zōshi》 (detail)
Fukuda Art Museum / First Shown at this museum

About the Fukuda Art Museum

A Harmony of Beautiful Nature and Japanese Art – A New Place to Transmit Japanese Culture

Since ancient times, the Saga-Arashiyama area, home to the Fukuda Art Museum, has been loved by nobles and cultured people and served as a source of inspiration for outstanding art. Based on the concept of creating a facility that lasts for 100 years, the Fukuda Art Museum will convey Japanese culture, passed down over hundreds of years to the present day, to successive generations in order to foster its further development. The museum's founder, Fukuda Yoshitaka, was born and raised in Kyoto, launched his business in the city, and remains active there today. Fukuda's decision to establish a museum was rooted in his sincere desire to repay locals and the entire Kyoto area for the generous support he has received over the years. The Fukuda Art Museum was established in October 2019. Today, Arashiyama has become one of Japan's leading tourist destinations, attracting domestic sightseers as well as visitors from all over the world.

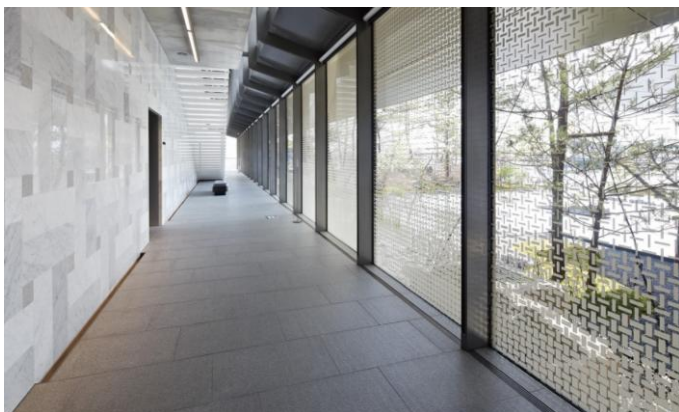
By enabling viewers to enjoy the beautiful natural landscape along with works of Japanese art, we hope that Arashiyama will become one of the world's leading sites for culture.

The Fukuda Art Museum celebrated its fifth anniversary in October 2024. With the concept of 'an art museum that will last for 100 years', the museum will continue to pass on Japanese culture handed down to the present day to the next generation and aims to connect it to further development.



Japanese Architecture Suited both to Arashiyama and the Future

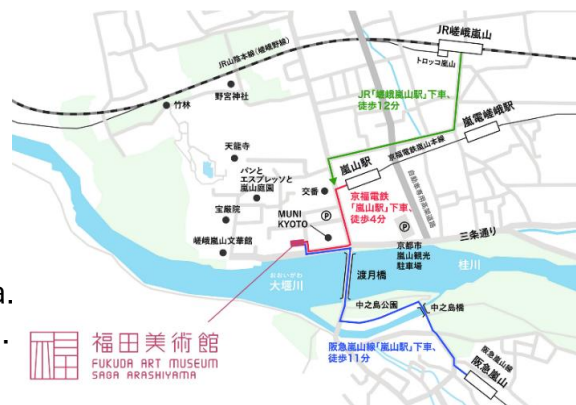
Koichi Yasuda, the architect of the Fukuda Art Museum aimed for a new kind of Japanese architecture that will serve as a standard for the next 100 years, including galleries that are inspired by *kura* storehouses or a corridor that recalls a traditional *engawa* (verandah). A large basin in the garden reflects Arashiyama, functioning like a water mirror connected to the Oigawa (Katsura) River, which flows right there in front of you. Inside the museum is a café, which was designed to provide the most beautiful view of the Togetsukyo Bridge, a local landmark.



Fukuda Art Museum Overview

■ Name	Fukuda Art Museum
■ Opening Hours	10:00 - 17:00 (last entry 16:30)
■ Closing	Exchange for exhibition, Facility inspection Year-end(Dec. 30 – Jan. 1)

■ Access	3-16 Susukino-babacho Saga-tenryuji Ukyoku, Kyoto City 616-8385 4 min walk from Randen Arashiyama Sta. 11 min walk from Hankyu Arashiyama Sta. 12 min walk from JR SagaArashiyama Sta.
----------	--



■ 料金	<p><Fukuda Art Museum> General (over 18) : 1500 yen Student from 16-18 years old: 900 yen Student from 7-15 years old: 500 yen Disabled person and a carer : 900 yen each</p> <p><Combo ticket with Saga Arashiyama Museum of Arts & Culture> General (over 18) : 2300 yen Student from 16-18 years old: 1300 yen Student from 7-15 years old: 750 yen Disabled person and a carer : 1300 yen each</p>
------	--

Inquiries from Press

Fukuda Art Museum PR Office (at KYODO PUBLIC RELATIONS CO., LTD.)
 In-charge : Tanaka / Higuchi
 Email : fukudamuseum-pr@kyodo-pr.co.jp

General Inquiries

TEL : 075-863-0606 Email : info@fukuda-art-museum.jp