

Attention: Members of the press

2025.3  
Fukuda Art Museum

## Fukuda Art Museum 2025 Annual Schedule of Special Exhibitions

The Fukuda Art Museum is pleased to announce its exhibition schedule for the fiscal year 2025 as follows: until April 13, 'Higashiyama Kaii and a journey through landscape: from Japan to the World' is held on the theme of the household painter for Japanese and landscape painting. From April to July, for the first time in three and a half years, the exhibition 'A Life Absorbed in painting: Kyoto Master Artist Konoshima Ōkoku' will be held in collaboration with the Saga Arashiyama Museum of Arts & Culture. From July to October, the exhibition 'Japanese Art at World's Fairs from the Late Edo Period Onwards Expo: Nihonga in Profusion' will introduce Japanese painters who competed at the past Expo such as Katsushika Hokusai. And from October to January the following year, the exhibition 'Uemura Shōen and the Trajectory of *Bijin-ga*' will feature Uemura Shoen, one of the leading women artists of modern Japan. From January to April 2026, the museum plans to hold 'Kyoto Stories (tentative)', featuring works painted with Kyoto motifs and painters with connections to the city. As the museum celebrates its fifth anniversary, look out for the ever-expanding collection and the unique curation of the Fukuda Art Museum.

### <Annual Schedule of Fukuda Art Museum Special Exhibitions>

|                                     |   |
|-------------------------------------|---|
| Feb. 1, 2025 (Sat) – Apr. 13 (Sun)  | Higashiyama Kaii and a journey through landscape: from Japan to the World   |
| Apr. 26 (Sat) – Jul. 6 (Sun)        | A Life Absorbed in painting: Kyoto Master Artist Konoshima Ōkoku  |
| Jul. 19 (Sat) – Sep. 28 (Sun)       | Japanese Art at World's Fairs from the Late Edo Period Onwards Expo: Nihonga in Profusion<br>Hokusai · Taikan · Suiseki |
| Oct. 11 (Sat) – Jan. 18, 2026 (Sun) | Uemura Shōen and the Trajectory of <i>Bijin-ga</i>  |
| Jan. 31, 2026 (Sat) – Apr. 12 (Sun) | Kyoto Stories (tentative)   |

### Inquiries from Press

Fukuda Art Museum PR Office (at KYODO PUBLIC RELATIONS CO., LTD.)  
In-charge : Tanaka / Higuchi  
Email : fukudamuseum-pr@kyodo-pr.co.jp

February 1, 2025 (Sat) – April 13, 2025 (Sun)

---

## Higashiyama Kaitō and a journey through landscape: from Japan to the World



In Japan, Higashiyama Kaitō is a household name. Everyone has heard of his most famous paintings. Traveling all over Japan, he distinctively captured views woven by nature. He specialized in landscapes and learned by painting in foreign lands. After studying in Germany, Kaitō painted scenes in Europe, China, and other parts of the world.

This exhibition will show about 30 of the museum's holding of Kaitō's works. These include, *The Blue Danube*, a view over the river from Melk Abbey in Austria and, on display for the first time at Fukuda Art Museum, *Evening Cool* which depicts Shugakuin Imperial Villa in Kyoto. Other works on show include paintings by Kaitō's Japanese contemporaries such as Yokoyama Taikan and Hishida Shunshō, who sought to up their game by travelling to America and Europe. You can also see paintings by overseas artists who influenced modern Japanese painters such as Camille Corot and Claude Monet.

April 26, 2025 (Sat) – July 6, 2025 (Sun)

---

## A Life Absorbed in Painting: Kyoto Master Artist Konoshima Ōkoku



This will be a retrospective exhibition of Konoshima Ōkoku's work after a three-and-a-half-year interval since the exhibition held in 2021. The exhibition will introduce a number of works from the new collection, including a joint work by Ōkoku and Kishi Chikudō, *Arashiyama Crystal Flow*, which will be exhibited for the first time in 110 years, as well as representative works that show Ōkoku's achievement. This exhibition will be jointly held with the Saga Arashiyama Museum of Arts & Culture in pursuit of the origins of Ōkoku's art.

July 19, 2025 (Sat) – September 28, 2025(Sun)

---

## Japanese Art at World's Fairs from the Late Edo Period Onwards

Expo: Nihonga in Profusion Hokusai • Taikan • Suiseki

For the 1900 Paris Exposition Universelle, many Japanese painters eagerly rose to the challenge of creating paintings to show what Japan could do. To commemorate the 2025 Expo being held here in Kansai, the museum is showing superlative works by painters who dared exhibit their art to the world, such as Katsushika Hokusai or Ōhashi Suiseki who became the first-ever nihonga artist to win an expo gold medal.



October 11, 2025 (Sat) – January 18, 2026 (Sun)

---

## Uemura Shōen and the Trajectory of *Bijin-ga*

To commemorate the 150th anniversary of Uemura Shoen's birth in 2025, the Fukuda Art Museum is proud to present a generous selection of her outstanding works, together with paintings of beautiful women by other artists of the same period. The exhibition also draws attention to Shoen's particular focus on eyebrows and nape of the neck, which she used to make women shine in her Japanese paintings.



January 31, 2026 (Sat) – April 12, 2026 (Sun)

---

## Kyoto Stories (tentative)

The ancient capital of Kyoto attracts people not only from within Japan but also from all over the world. The Fukuda Art Museum has a large collection of works by painters who were fascinated by Kyoto. From temples, shrines and old townscapes to food, the charm of Kyoto expressed through the eyes of the painters will make you fall in love with the city even more.



# About the Fukuda Art Museum

## A Harmony of Beautiful Nature and Japanese Art – A New Place to Transmit Japanese Culture

Since ancient times, the Saga-Arashiyama area, home to the Fukuda Art Museum, has been loved by nobles and cultured people and served as a source of inspiration for outstanding art. Based on the concept of creating a facility that lasts for 100 years, the Fukuda Art Museum will convey Japanese culture, passed down over hundreds of years to the present day, to successive generations in order to foster its further development. The museum's founder, Fukuda Yoshitaka, was born and raised in Kyoto, launched his business in the city, and remains active there today. Fukuda's decision to establish a museum was rooted in his sincere desire to repay locals and the entire Kyoto area for the generous support he has received over the years. The Fukuda Art Museum was established in October 2019. Today, Arashiyama has become one of Japan's leading tourist destinations, attracting domestic sightseers as well as visitors from all over the world.

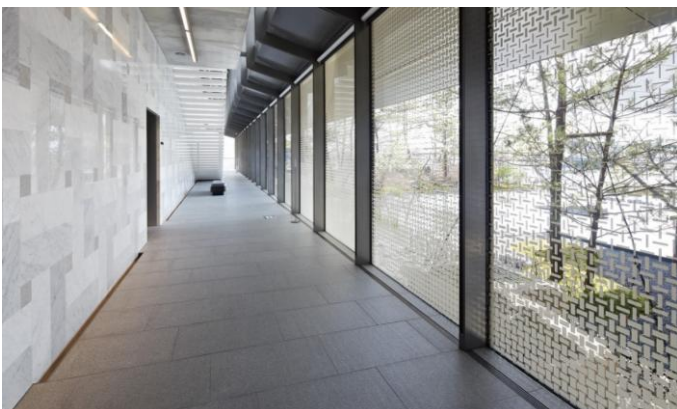
By enabling viewers to enjoy the beautiful natural landscape along with works of Japanese art, we hope that Arashiyama will become one of the world's leading sites for culture.

The Fukuda Art Museum celebrated its fifth anniversary in October 2024. With the concept of 'an art museum that will last for 100 years', the museum will continue to pass on Japanese culture handed down to the present day to the next generation and aims to connect it to further development.



## Japanese Architecture Suited both to Arashiyama and the Future

Koichi Yasuda, the architect of the Fukuda Art Museum aimed for a new kind of Japanese architecture that will serve as a standard for the next 100 years, including galleries that are inspired by *kura* storehouses or a corridor that recalls a traditional *engawa* (verandah). A large basin in the garden reflects Arashiyama, functioning like a water mirror connected to the Oigawa (Katsura) River, which flows right there in front of you. Inside the museum is a café, which was designed to provide the most beautiful view of the Togetsukyo Bridge, a local landmark.



## Fukuda Art Museum Overview

- Name                      Fukuda Art Museum
  
- Opening Hours            10:00 - 17:00 (last entry 16:30)
  
- Closing                    Exchange for exhibition, Facility inspection  
Year-end(Dec. 30 – Jan. 1)
  
- Access                    3-16 Susukino-babacho Saga-tenryuji  
Ukyoku, Kyoto City 616-8385  
4 min walk from Randen Arashiyama Sta.  
11 min walk from Hankyu Arashiyama Sta.  
12 min walk from JR SagaArashiyama Sta.



- 料金
  
- <Fukuda Art Museum>  
General (over 18) : 1500 yen  
Student from 16-18 years old: 900 yen  
Student from 7-15 years old: 500 yen  
Disabled person and a carer : 900 yen each
  
- <Combo ticket with Saga Arashiyama Museum of Arts & Culture>  
General (over 18) : 2300 yen  
Student from 16-18 years old: 1300 yen  
Student from 7-15 years old: 750 yen  
Disabled person and a carer : 1300 yen each

### Inquiries from Press

Fukuda Art Museum PR Office (at KYODO PUBLIC RELATIONS CO., LTD.)  
In-charge : Tanaka / Higuchi  
Email : fukudamuseum-pr@kyodo-pr.co.jp

### General Inquiries

TEL : 075-863-0606    Email : [info@fukuda-art-museum.jp](mailto:info@fukuda-art-museum.jp)